



Shoreline Assets At-Risk by SLR & Lowland Flooding

S. F. Bay Shoreline

\$100 Billion

CA (Pacific Coast)

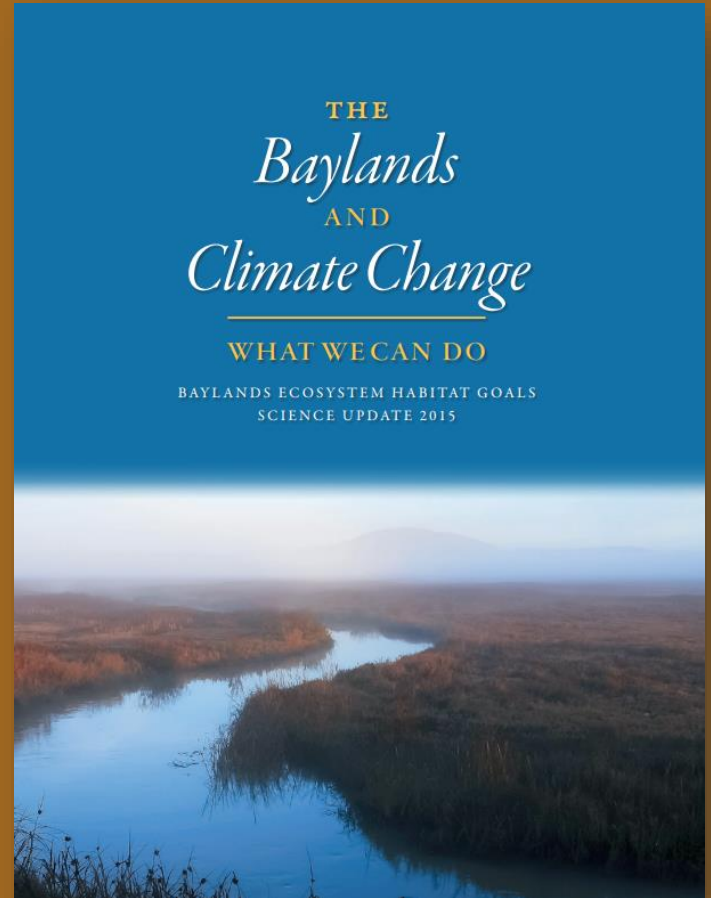
\$50 Billion

Case Study



S.F. Bay Adaptation Planning

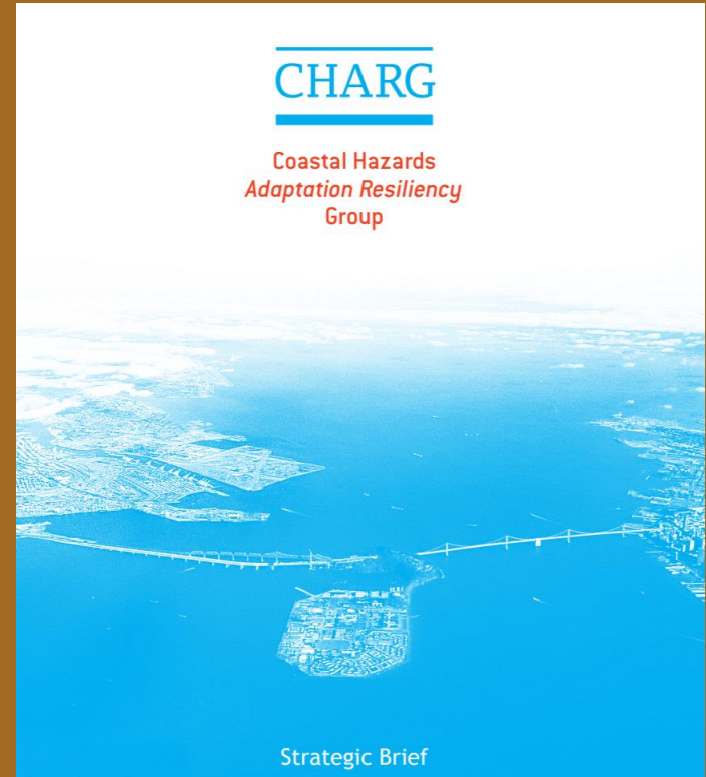
- Baylands Goals Report
- Restoration Authority
- Adapting to Rising Tides
- Plan Bay Area 2040
- Resilient by Design Challenge



BayCAN



CHARG

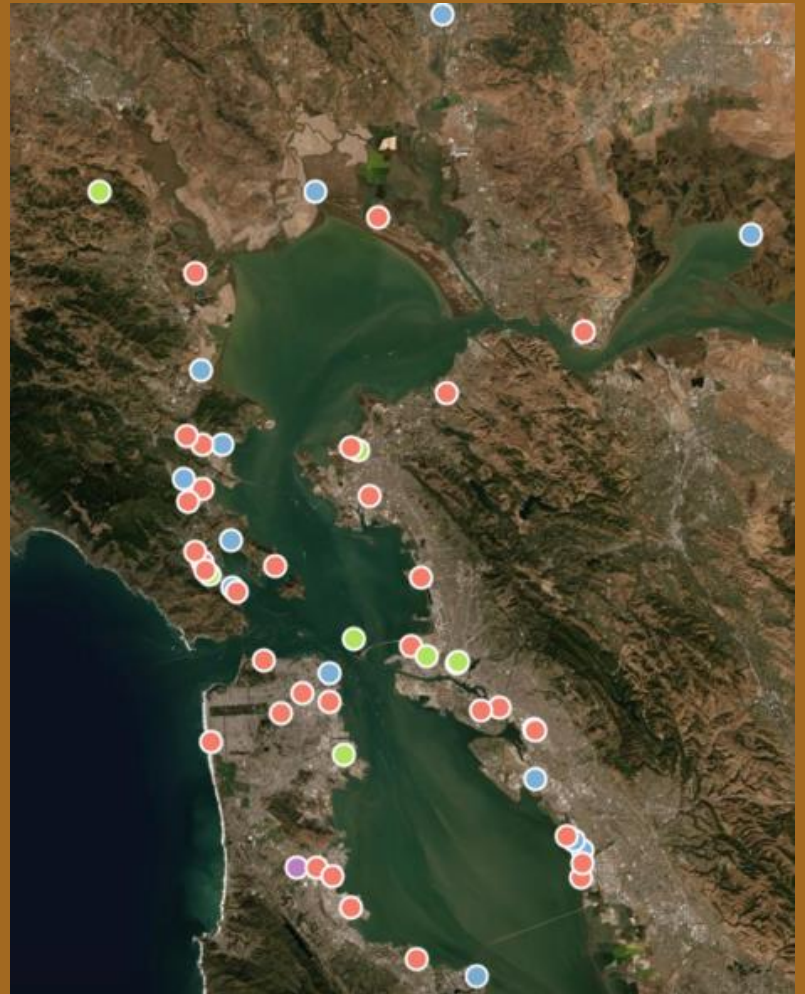


Local Adaptation Planning

Legend

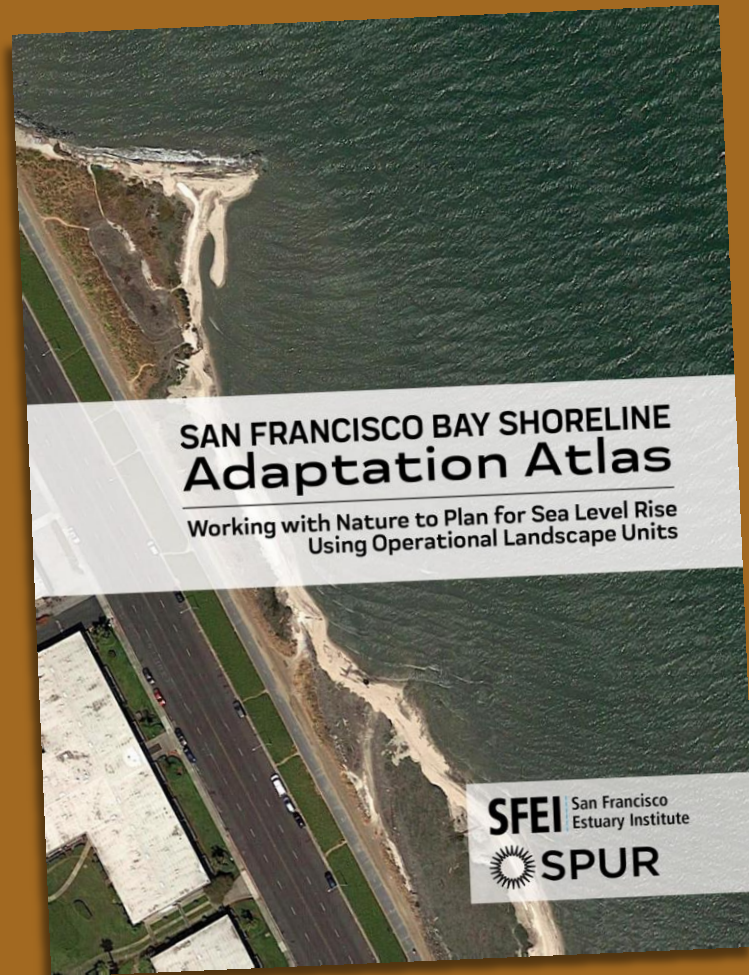
Adaptation Around the Region

- Vulnerability Assessment and Planning
- Physical Adaptation
- Community-based Organization
- Education initiatives



Adaptation Atlas

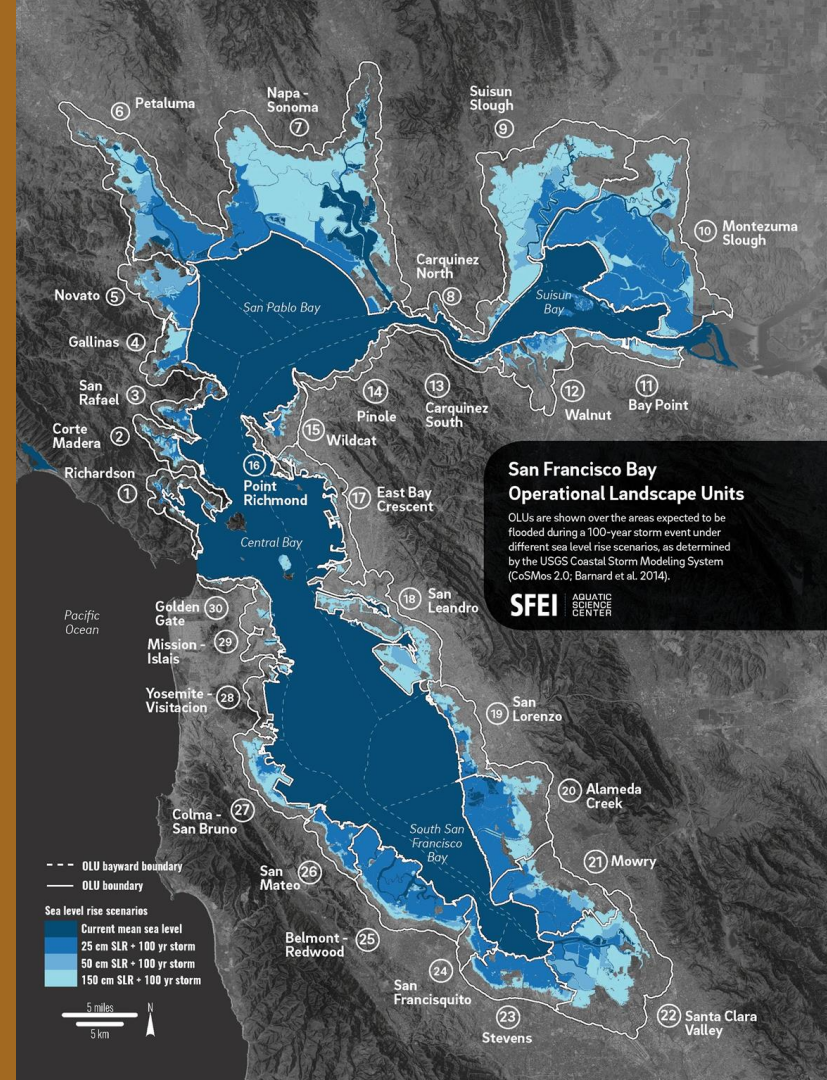
- A place-specific framework
- Nature-based and hybrid options
- Less expensive, more effective options
- Spans jurisdictions.



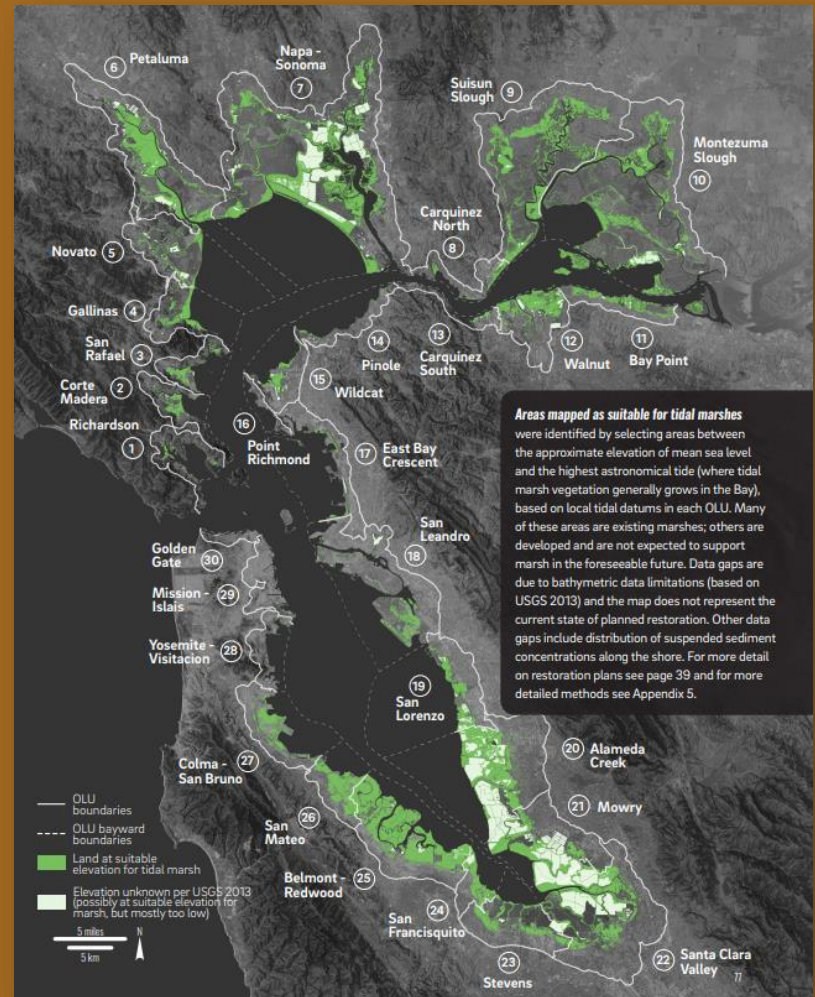
Operational Landscape Units

Areas with shared geophysical and land use characteristics suited for a particular suite of nature-based measures

SFEI



Tidal Marsh Restoration Options



Adaptation measures

Nature-based measures

- Nearshore reefs
- Beaches
- Tidal marshes
- Ecotone levees
- Migration space preparation
- Creek-to-bayland reconnections
- Green stormwater infrastructure

Regulatory & policy tools

- Zoning
- Setbacks, buffers,
- Building codes
- Rebuilding restrictions
- Conservation easements
- Tax incentives
- Geologic Hazard Districts
- Buyouts

Suitability of nature-based measures

Suitability Rating

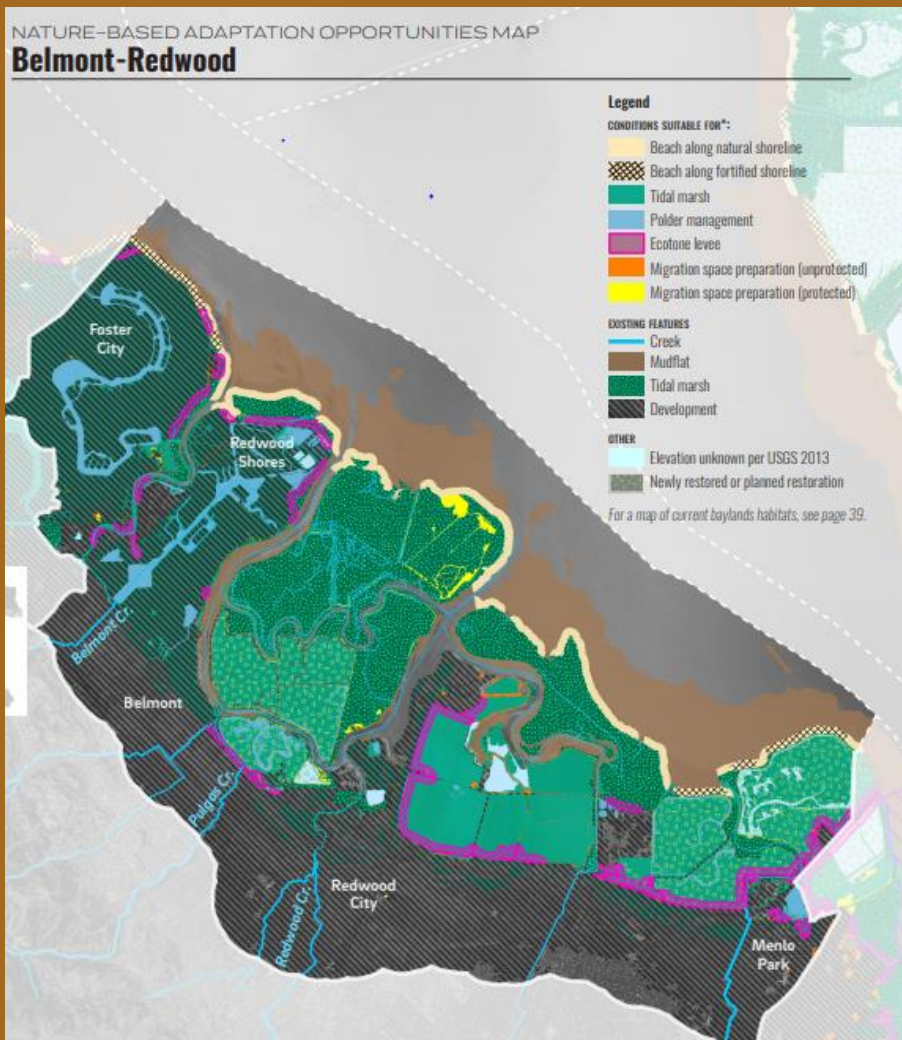
○ Limited
suitability

◐ Some
suitability

● High
suitability

	Nearshore reefs (p. 66)	Submerged aquatic vegetation (eelgrass) (p. 68)	Beaches (p. 72)	Tidal marshes (p. 76)	Polder management (p. 80)	Ecotone levees (p. 84)	Migration space preparation (p. 88)
1. Richardson	●	●	●	◐	○	◐	○
2. Corte Madera	●	●	●	◐	◐	◐	◐
3. San Rafael	●	●	●	◐	◐	◐	○
4. Gallinas	◐	●	○	●	●	◐	●
5. Novato	○	○	○	●	●	◐	●
6. Petaluma	○	○	○	●	●	○	●
7. Napa - Sonoma	○	○	○	●	●	◐	●
8. Carquinez North	○	○	○	●	○	◐	●
9. Suisun Slough	○	○	○	●	●	◐	●
10. Montezuma Slough	○	○	○	●	●	○	●
11. Bay Point	○	○	○	●	●	◐	●
12. Walnut	○	○	○	●	●	●	●
13. Carquinez South	○	○	○	◐	○	●	●
14. Pinole	●	○	●	◐	○	◐	○
15. Wildcat	●	●	●	●	◐	●	●
16. Point Richmond	●	●	●	○	○	○	○
17. East Bay Crescent	●	●	●	◐	○	●	○
18. San Leandro	○	●	●	◐	◐	○	○
19. San Lorenzo	○	●	●	●	◐	●	◐
20. Alameda Creek	○	○	●	●	●	●	●
21. Mowry	○	○	○	●	●	●	●
22. Santa Clara Valley	○	○	○	●	●	●	●
23. Stevens	◐	○	○	●	●	◐	◐
24. San Francisquito	●	○	○	●	◐	●	◐
25. Belmont - Redwood	○	○	●	●	●	●	○
26. San Mateo	○	●	●	◐	◐	◐	○
27. Colma - San Bruno	○	●	●	◐	○	◐	○
28. Yosemite - Visitation	●	●	●	○	◐	○	○
29. Mission - Islais	○	●	●	○	○	○	○
30. Golden Gate	○	○	●	○	○	○	○

Belmont-Redwood



Adaptation Atlas
Download:
adaptationatlas.sfei.org

