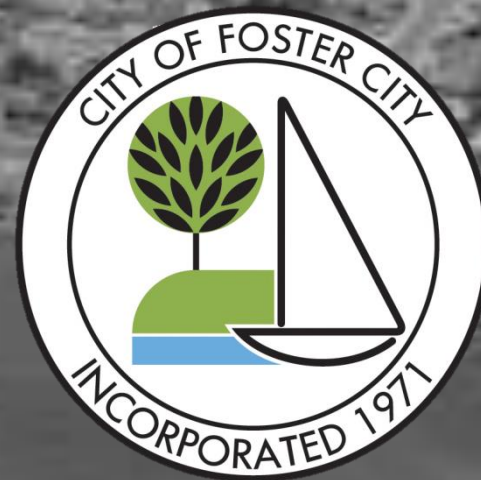




# LEVEE PROTECTION PLANNING AND IMPROVEMENTS PROJECT

Improving Today and Preparing for Tomorrow

**Sea Level Rise Meeting**  
February 7, 2020



**Schaaf & Wheeler**  
CONSULTING CIVIL ENGINEERS





# Mayor Mahanpour's Opening Comments

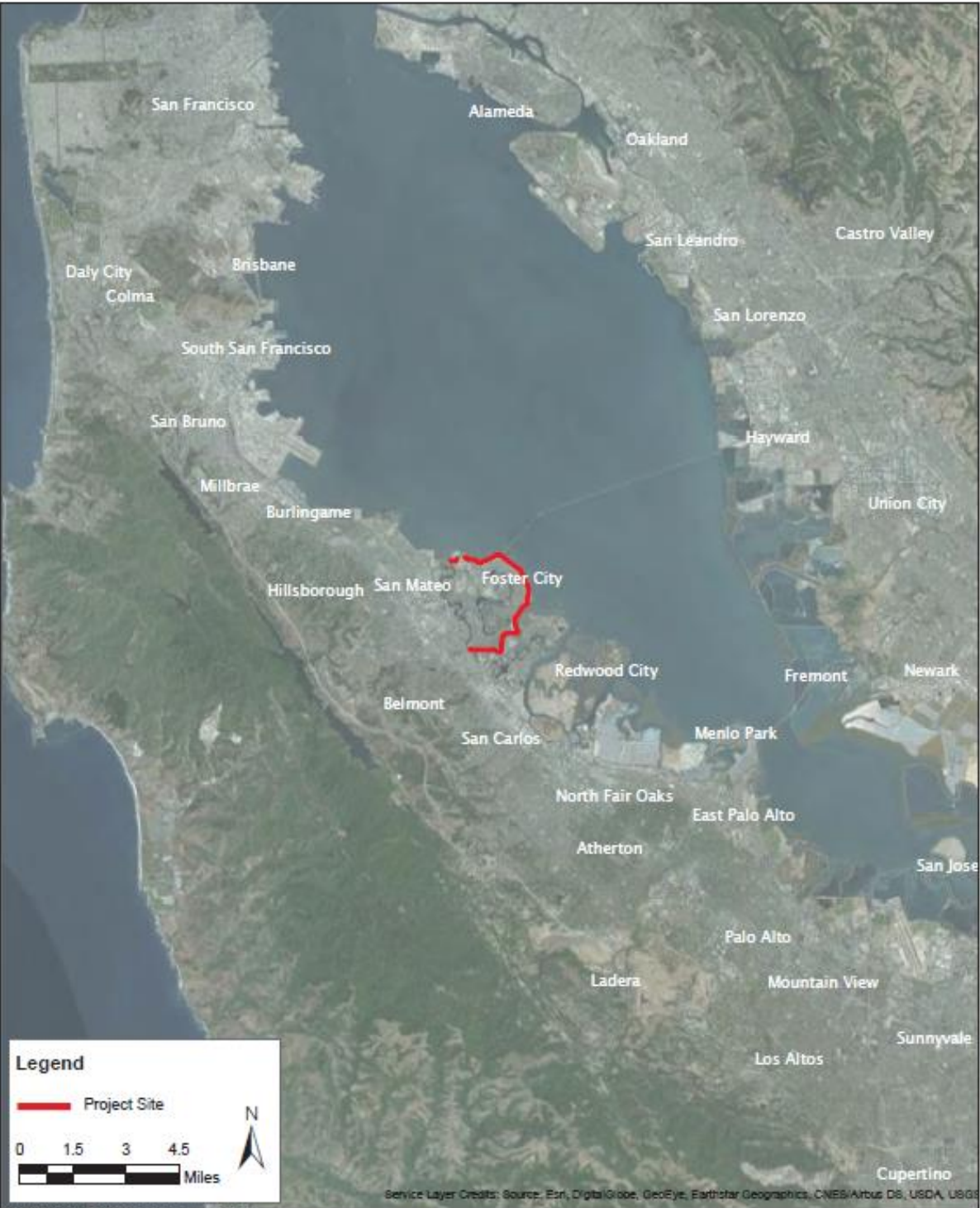
- Levee is the most important project for Foster City
- Project funded by a \$90 Million ballot measure, paid for by the property owners of Foster City
- Important to have regional solutions without Foster City property owners or other Cities being taxed twice
- Streamlining of environmental processes should be done
  - precedent of requirements has been set
  - 1 year to obtain permits is too long with rising construction costs in the Bay Area

# Presentation

- ❑ Project Overview
  - ❑ Location
  - ❑ Purpose
  - ❑ Design
  - ❑ Financing
  - ❑ Project Schedule
- ❑ Project Resilience and Adaptation to Future Sea Level Rise



# Project Location



Source: Schaaf & Wheeler, Urban Planning Partners, 2016  
Note: The location of staging areas are preliminary and may change.

Figure I-1  
Foster City Levee Protection Planning and Improvements Project EIR  
Regional Context Map

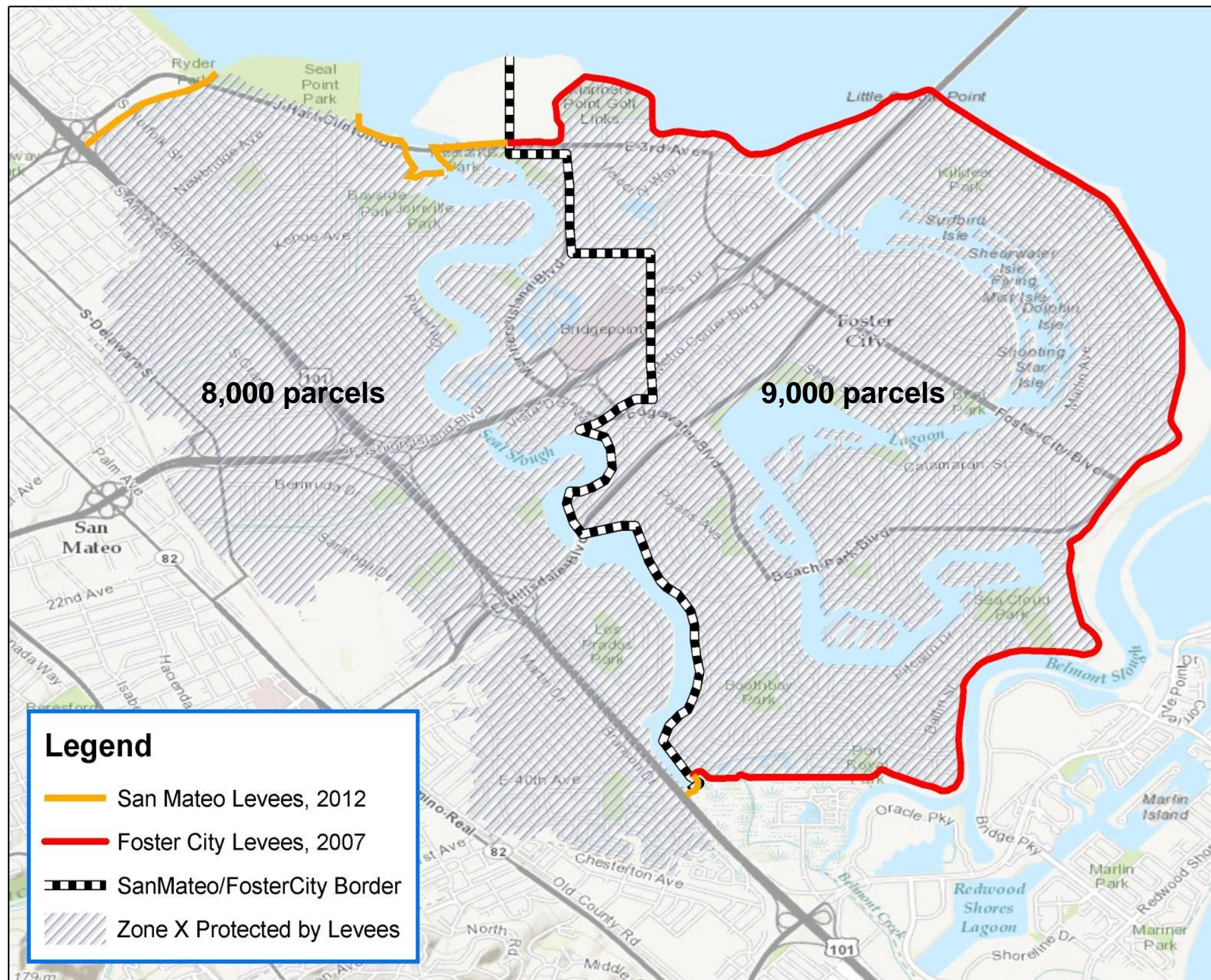


Figure 1. Location Map  
Levee Protection Planning and Improvement Project CIP 301-857  
City of Foster City, San Mateo County, California

Huffman-Broadway Group, Inc.  
ENVIRONMENTAL REGULATORY CONSULTANTS



# Project Purpose and Timeline



<b>2014</b>	FEMA CCAMP
2015	Seclusion Mapping
2017	Final EIR Certified
2018	Measure P Passes
2019	Design and Permits
2020	Begin Construction
<b>2023</b>	End Construction

CITY OF FOSTER CITY MEASURE P (2/3 APPROVAL REQUIRED)			
Complete Precincts:	15	of	15
YES	6,275		80.65%
NO	1,506		19.35%



# Project Design

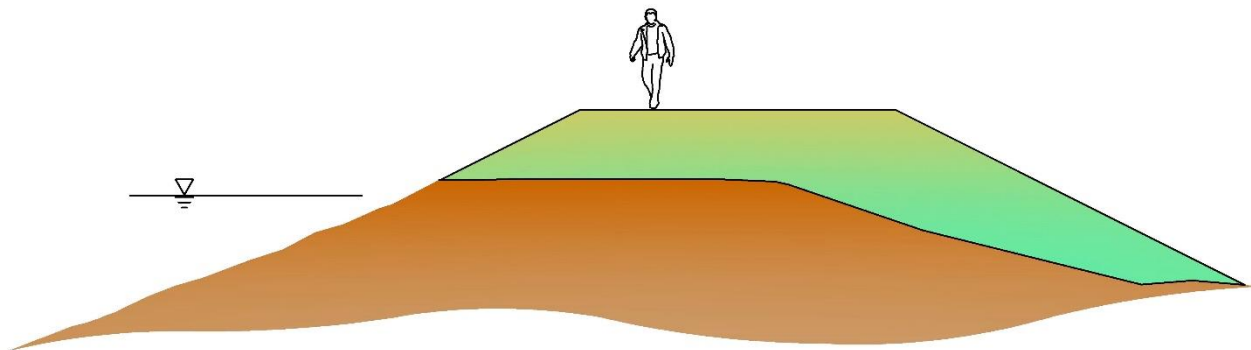


The required top of post-settlement levee/wall elevation is established by running FEMA's regional hydrodynamic wave model, adding 2 feet for sea level rise, and calculating wave runup at the shoreline.

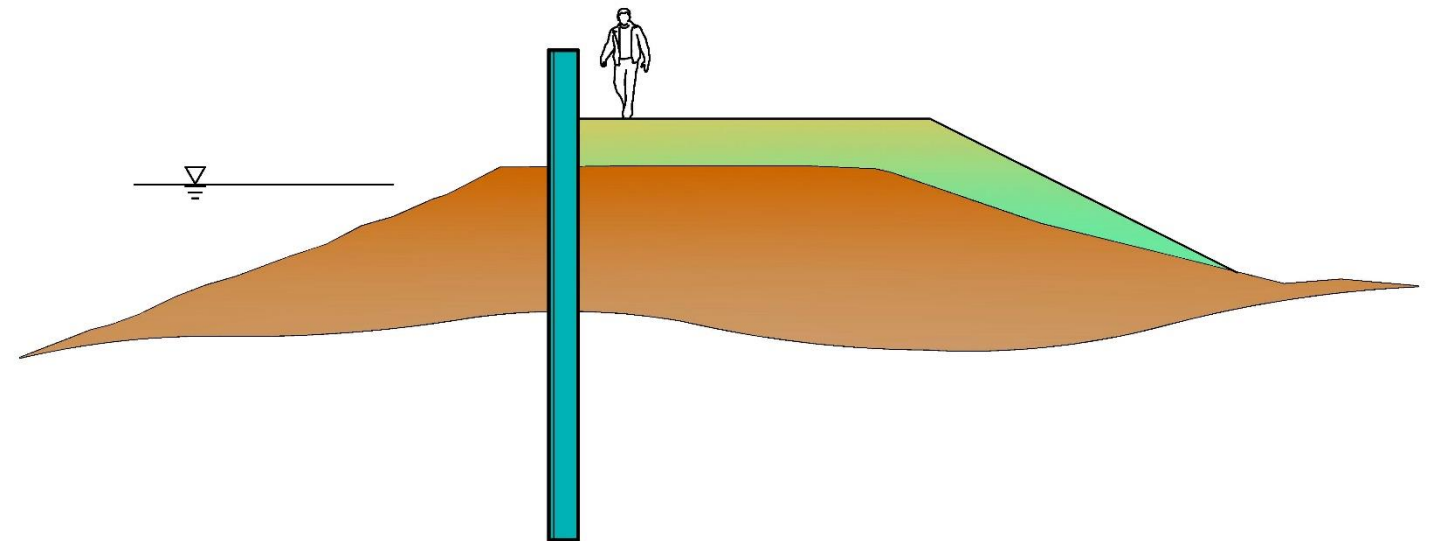
The project will allow FEMA accreditation of a levee system that protects approximately 17,000 parcels within Foster City and San Mateo and is resilient to the maximum wave runup associated with the 100-year storm surge including sea level rise anticipated by 2050 with 99.5 percent certainty.



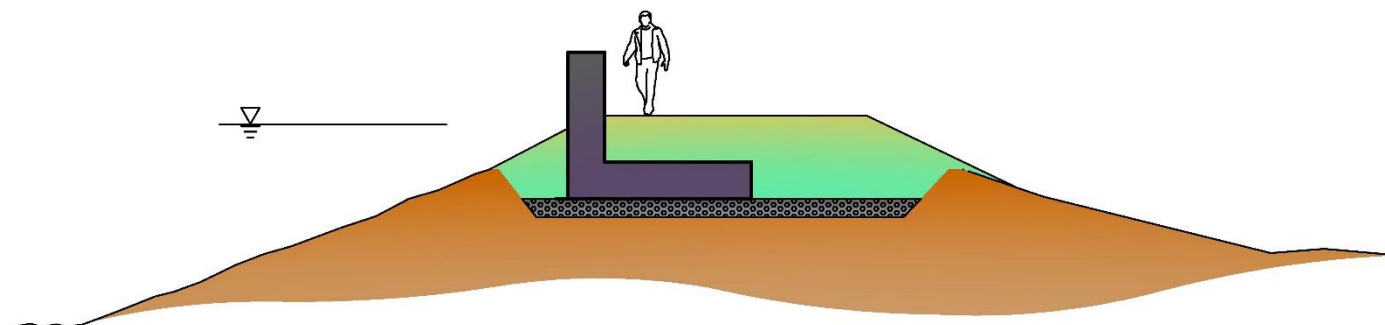
# Project Design



EARTHEN LEVEE



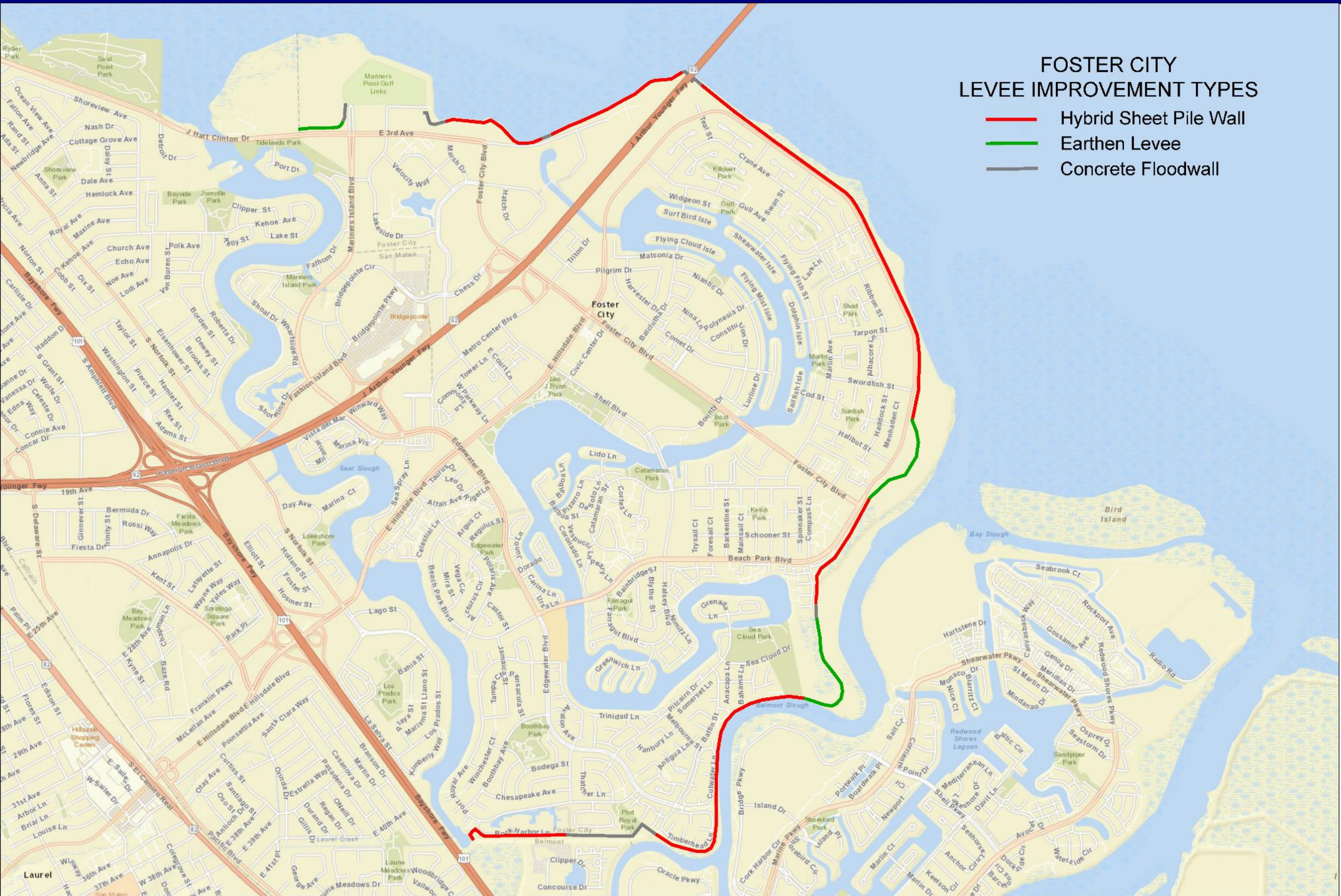
HYBRID SHEET PILE WALL



CONVENTIONAL FLOOD WALL



# Project Design



## FOSTER CITY LEVEE IMPROVEMENT TYPES

- Hybrid Sheet Pile Wall
- Earthen Levee
- Concrete Floodwall

Hybrid	22,300 LF
Earthen	5,400 LF
Floodwall	4,000 LF








# Public Access



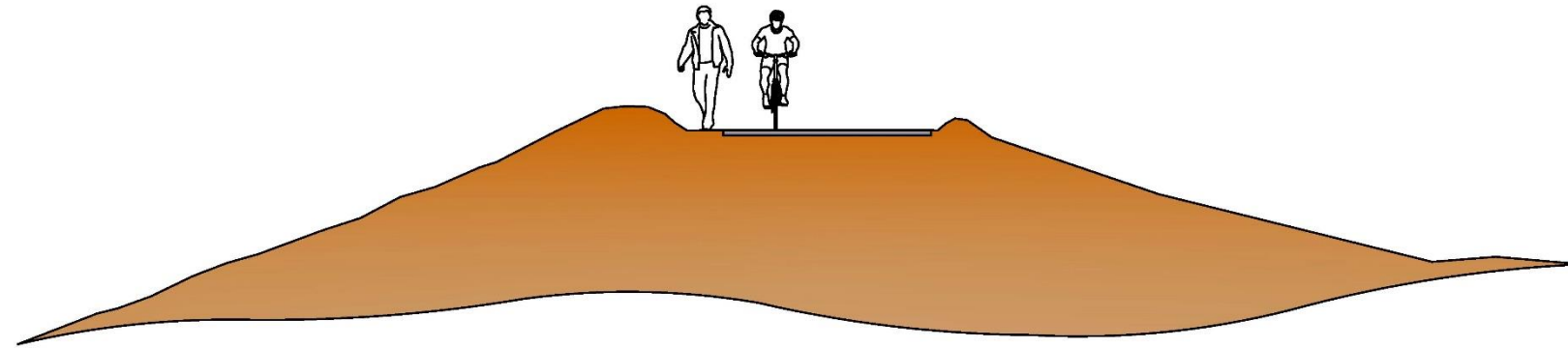
- ❑ June 2016 *San Francisco Bay Trail Guidelines and Toolkit*
- ❑ Bay Trail widened 50 percent
- ❑ Improved public access
  - ❑ ADA compliance
  - ❑ Cyclist and board surfing amenities

## Legend

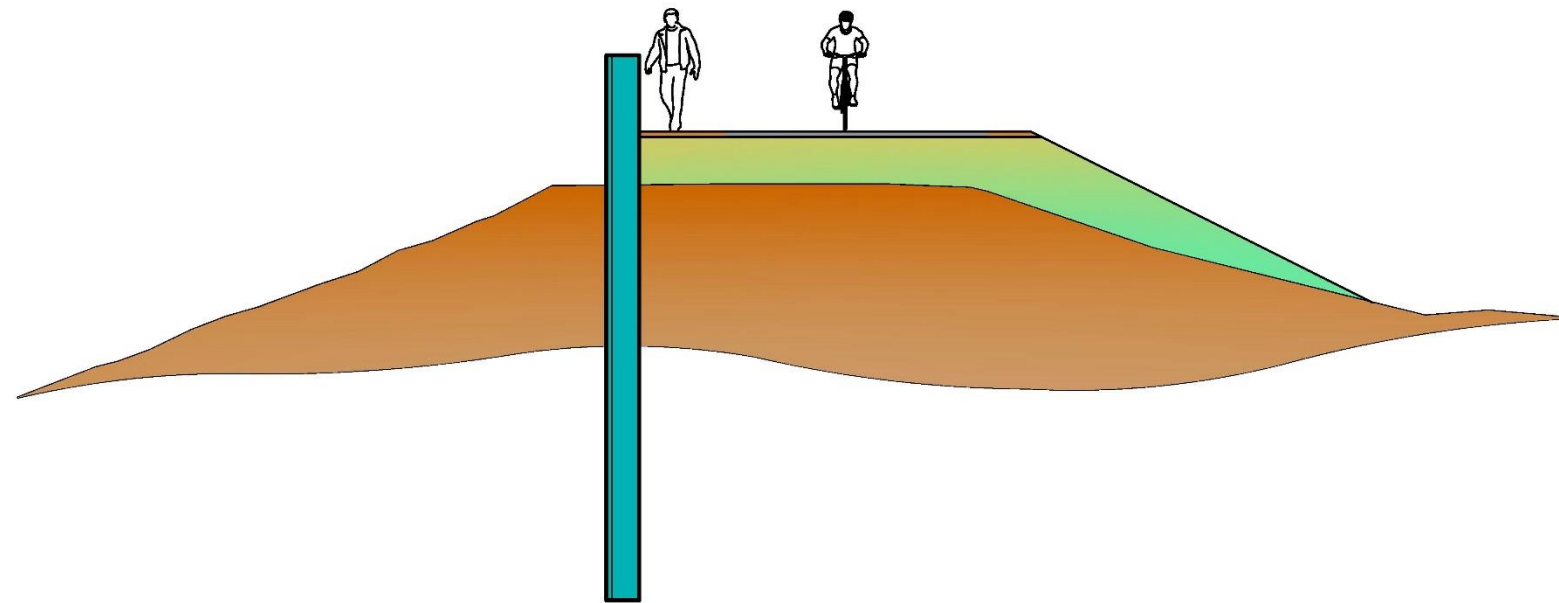
-  Bay Access
-  Trail Access
-  10-FT Path with Shoulder
-  12-FT Path with Shoulder
-  12-FT Path, No Shoulder Inboard Side
-  No Improvements



# Public Access



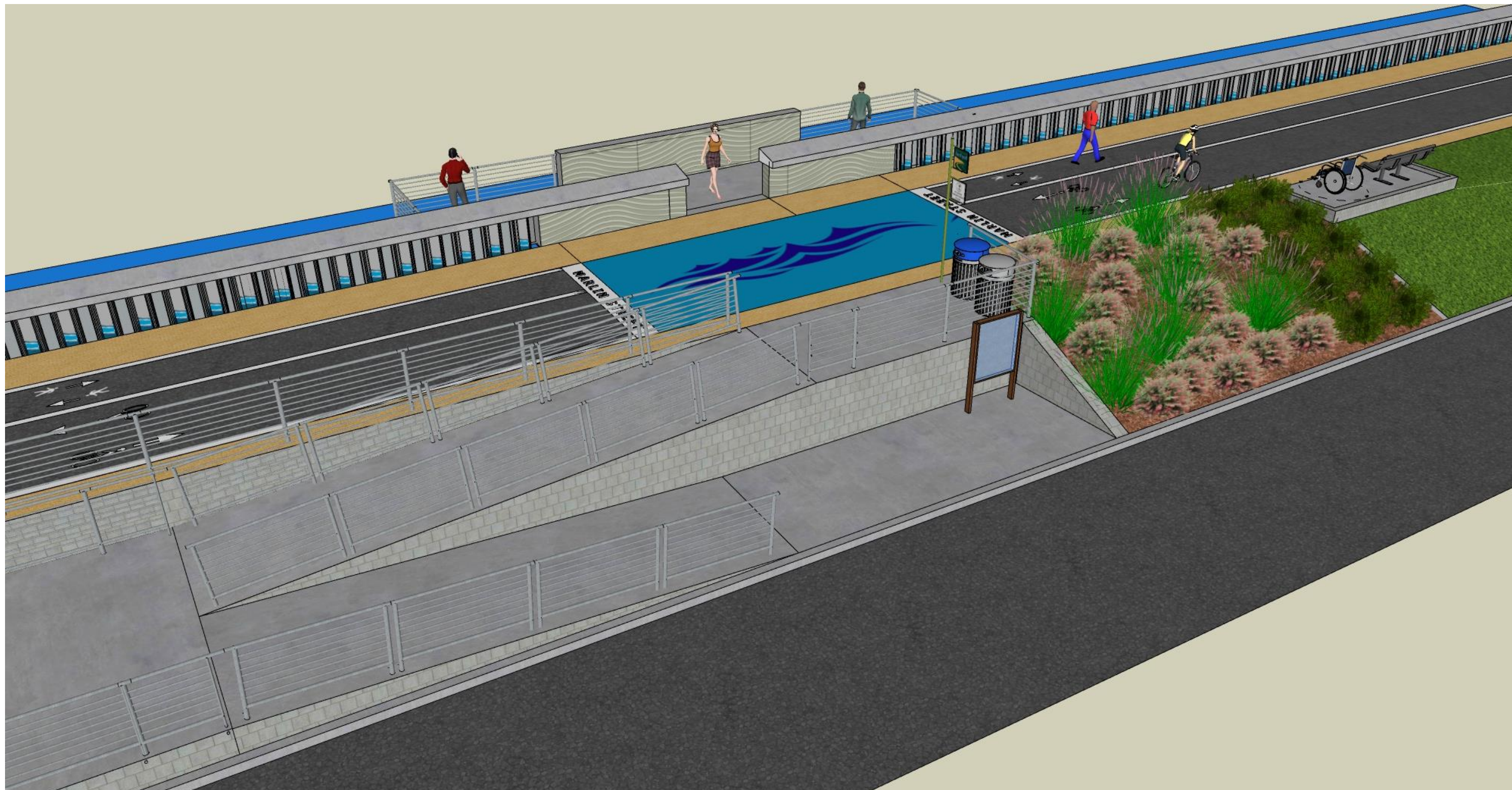
EXISTING BAY TRAIL IS 12 FEET WIDE OR LESS ON AVERAGE



IMPROVED BAY TRAIL WILL BE 18 FEET WIDE



# Public Access





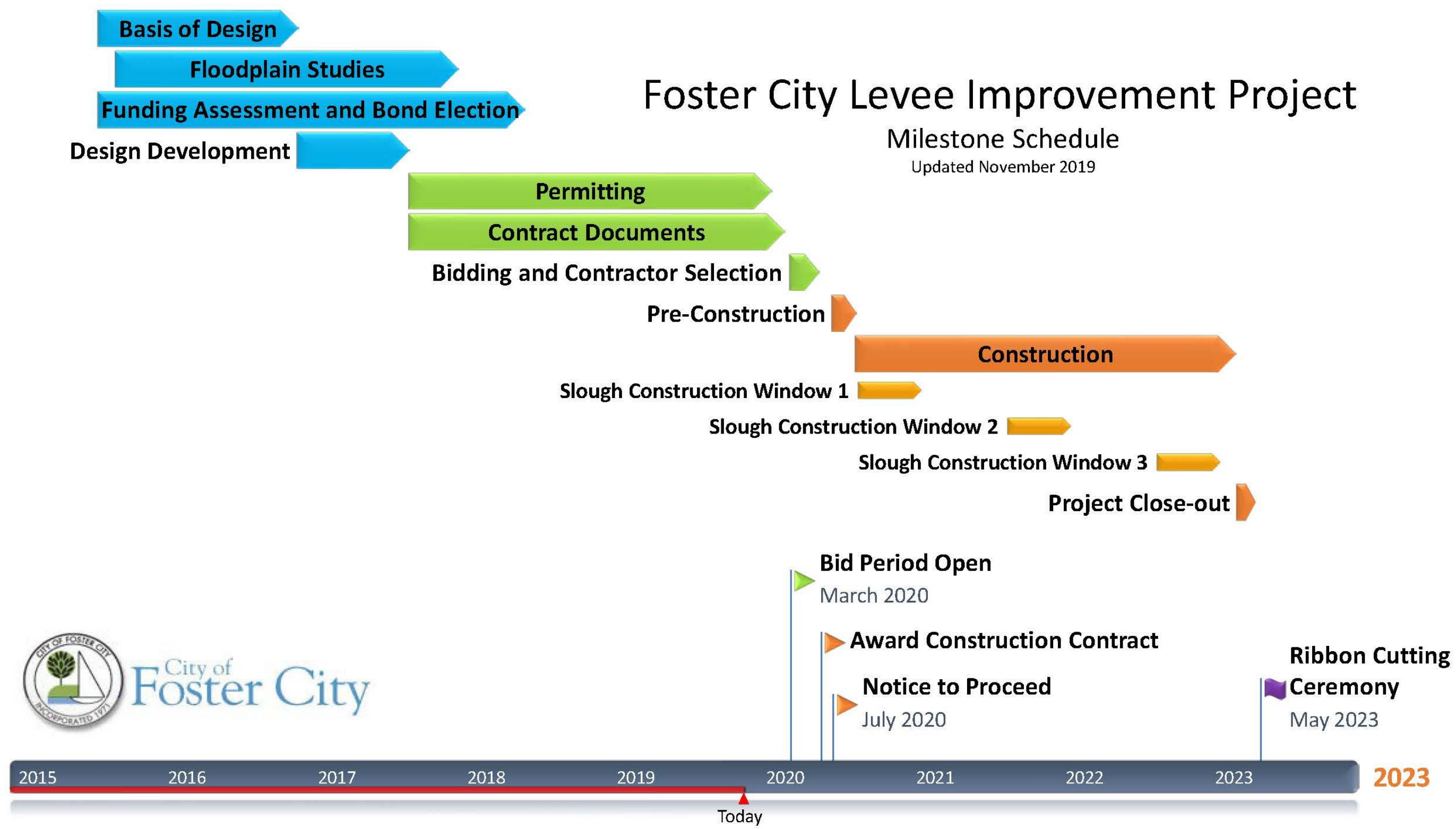
# Project Financing

- ❑ Current approximate construction cost estimate is \$90 million.
- ❑ Foster City is financing 100% of project costs.
  - ❑ Measure P bond sales
  - ❑ General funds





# Project Schedule

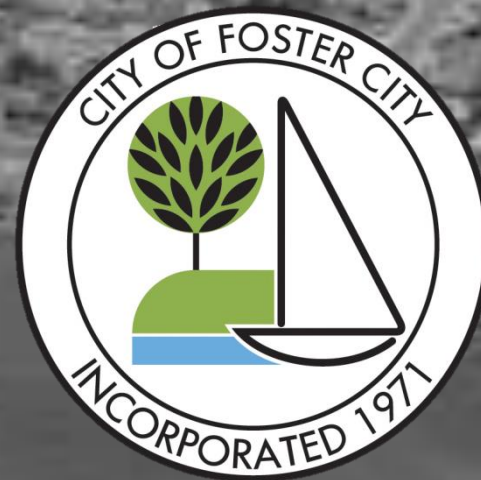






# LEVEE PROTECTION PLANNING AND IMPROVEMENTS PROJECT

Improving Today and Preparing for Tomorrow



**Schaaf & Wheeler**  
CONSULTING CIVIL ENGINEERS

